
 Why did the Chicken
Cross the Road

**PEDESTRIAN
AND
BICYCLE LAWS**



Why Am I Even Here ?



Why Am I Even Here ?



Bicyclists and Pedestrian Laws are relevant because

- 1 **Health and Safety**
- 2 **It's the Law**
- 3 **Resources Diverted**



OBJECTIVES

Identify Pedestrian and Bicycle laws as a Municipal Court Issue;

Discuss community safety related to Pedestrian and Bicycle laws;

Name one resource particular to Pedestrian and Bicycle regulation.

What are the numbers ?

2009 Bicycles

- 630 fatal (2%)
- 51,000 injured
- 17,000 or 17% of injured were U14

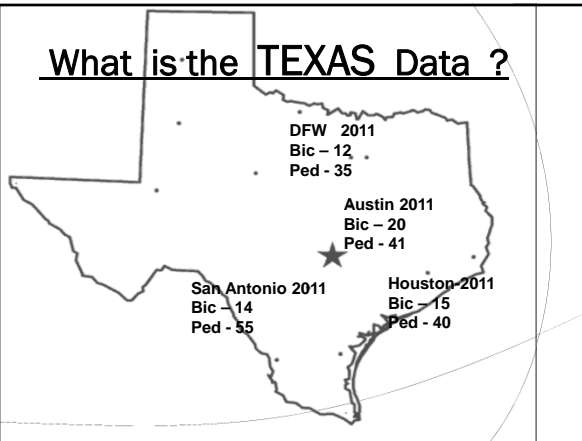
2009 Pedestrians

- 4092 fatal (12%)
- 59,000 injured
- 13,000 or 17% of injured were U 14

National Highway Traffic Safety Administration



What is the TEXAS Data ?



Who would focus on this data ?

- ◉ Fed Hwy Adm N
- ◉ NTSA
- ◉ TxDOT
- ◉ DPS
- ◉ Cities

\$

1. Safety
2. Law
3. Resources

Data Application

1. Traffic Engineering (Road Construction)

- crosswalk stop lines moved back
- diagonal parking
- preventive markings painted on pavement

Data Application

2. Training and Education

"Willy the Whistle"
Street crossing program for kindergarten Look L-R-L

https://www.nysdot.gov/about-nysdot/kids-corner/repository/sss_kids/walk_here.html

Data Application

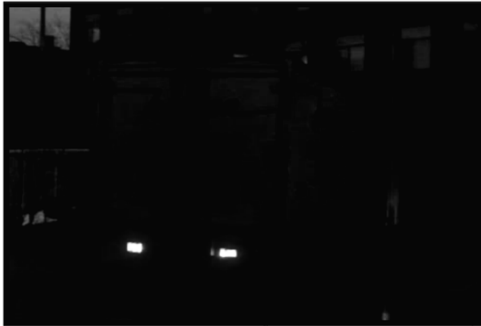
3. Enforcement – Traffic Safety Regulations

1969 study - enforcement focused on drivers not the relationship between driver and pedestrian.

9 focus areas



LISTEN to This



Another Focus Area



Pedestrian Research -1998



Pedestrian Research - 1998







Texas
Transportation Code
552 (Ped) & 551 (Bike) It's the LAW
 Pedestrian: A person on foot 541.001 (3)

Must follow traffic signals 552.001
 Walk on available sidewalk 552.006 or
 Left side / shoulder, facing traffic 552.006
 Crosses generally at crosswalks 552.005





Texas
Transportation Code
552 (Ped) & 551 (Bike) It's the LAW
A Bicycle is a tandem wheeled, human powered device with 1 wheel <14",

Same rules as vehicles (551)
Parent responsible for child 551.101
Use of road & Bike, equipment (551)

You make the call



A person may not use a bicycle to carry more persons than the bicycle is designed or equipped to carry. (551.102b)

You make the Call



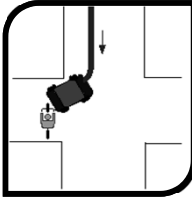
May not carry an Object that prevents having at least one hand on the handlebars (551.102c)

You make the Call



A person operating a bicycle shall ride only on or astride a permanent and regular seat attached to the bicycle (551.102a)

The cross walk Slam

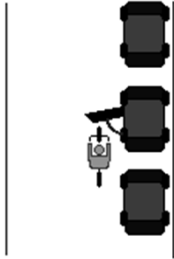


The diagram shows a top-down view of a motorcycle at a crosswalk. The motorcycle is positioned on the sidewalk, with its front wheel at the edge of the crosswalk. An arrow points to the front headlight, and another arrow points to the front wheel.

How to avoid this collision:

1. Get a headlight. At night, It's required by law.
2. Slow down enough that you're able to completely stop if necessary.
3. Don't ride on the sidewalk in the first place.

Door Prize

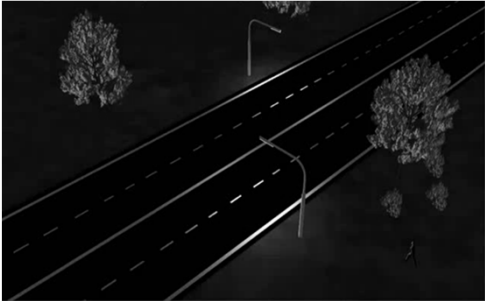


The diagram shows a top-down view of a motorcycle parked between three cars. The motorcycle is positioned in the space between the cars, with its front wheel at the edge of the car's door. An arrow points to the front headlight.

How to avoid this collision:

Ride to the left. Ride far enough to the left that you won't run into any door that's opened unexpectedly.

What's Up Here ?



The image is an aerial night view of a road with a dashed center line and solid edge lines. There are trees and streetlights visible on either side of the road.

Where did the Chicken cross the Road (and what was there) ?



Where did the Chicken cross the Road (and what was there) ?



WHY

Safety issues

Laws are mostly traffic Name 1 resource

Diverted Resources

We are all about to

WALK out of here

WALK to our cars

WALK across the street
