



BICYCLES

PEDESTRIANS IN TEXAS

Why Am I Even Here ?



LIVE

SUSPECT IS ON A BICYCLE

Why Am I Even Here ?



LIVE

SUSPECT IS ON A BICYCLE

Bicyclists and Pedestrian Laws are relevant because

- 1 Health and Safety
- 2 It's the Law
- 3 Resources Diverted

OBJECTIVES

Identify Pedestrian and Bicycle laws as a Municipal Court Issue;

Discuss community safety related to Pedestrian and Bicycle laws;

Name one resource particular to Pedestrian and Bicycle regulation.



What are the numbers ?

2009 Bicycles

- 630 fatal (2%)
- 51,000 injured
- 17,000 or 17% of injured were U14

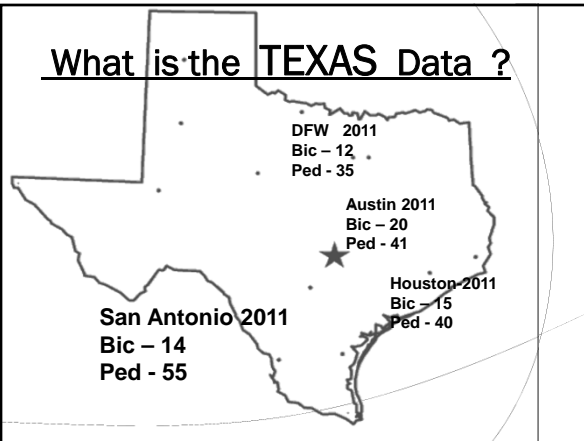
2009 Pedestrians

- 4092 fatal (12%)
- 59,000 injured
- 13,000 or 17% of injured were U 14

National Highway Traffic Safety Administration



What is the TEXAS Data ?



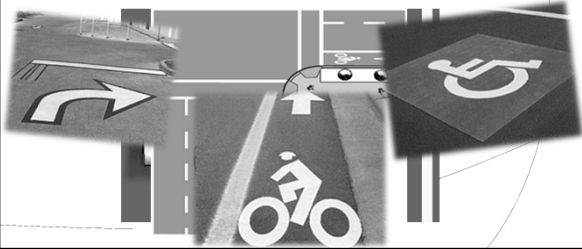
Who would focus on this data ?

- Fed Hwy Admn
 - NTSA
 - TxDOT
 - DPS
 - Cities
- \$**
1. Safety
 2. Law
 3. Resources

Data Application

1. Traffic Engineering (Road Construction)

- crosswalk stop lines moved back
- diagonal parking
- preventive markings painted on pavement



Data Application

2. Training and Education

- "Willy the Whistle"
- Street crossing program for kindergarten Look L-R-L



https://www.nysdot.gov/about-nysdot/kids-corner/repository/sss_kids/walk_here.html

Data Application

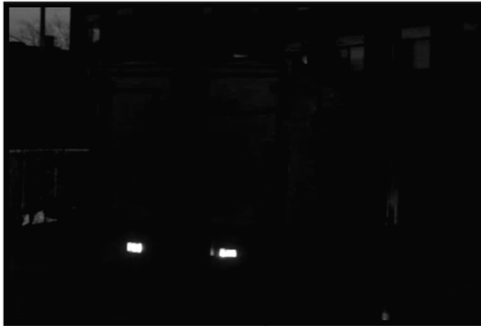
3. Enforcement – Traffic Safety Regulations

1969 study - enforcement focused on drivers not the relationship between driver and pedestrian.

9 focus areas



LISTEN to This



Another Focus Area



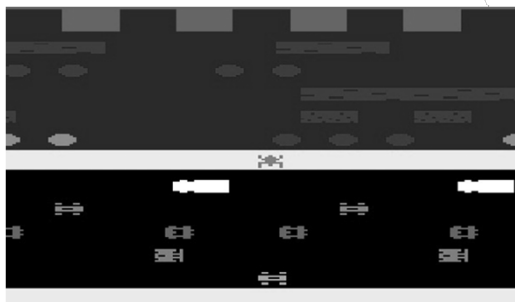
Pedestrian Research -1998



Pedestrian Research - 1998



WHERE ! Did the Frog Cross the Road





U.S. Department of Transportation
Federal Highway Administration

<http://www.fhwa.dot.gov/environment/bikeped/publications.htm>

★★★★★
NHTSA
NATIONAL HIGHWAY TRAFFIC SAFETY ADMINISTRATION

<http://www.nhtsa.gov/Pedestrians>

<http://www.nhtsa.gov/Bicycles>

BikeTexas
Texas Bicycle Coalition
www.BikeTexas.org

<http://www.biketexas.org/>

<http://www.biketexas.org/en/education/educational-resources>

Texas Department of Transportation

<http://www.txdot.gov/safety/tips/bicycles.htm>

<http://www.txdot.gov/safety/tips/pedestrians.htm>

Texas

Transportation Code
552 (Ped) & 551 (Bike) **It's the LAW**

Pedestrian: A person on foot 541.001 (3)

Must follow traffic signals **552.001**
Walk on available sidewalk **552.006** or
Left side / shoulder, facing traffic **552.006**
Crosses generally at crosswalks **552.005**

What Would You Do ?



What Would You Do ?



Ped X-ing Crash



Ped X-ing Crash



Texas

Transportation Code
552 (Ped) & 551 (Bike)

It's the LAW

A **Bicycle** is a tandem wheeled, human powered devise with 1 wheel <14",

Same rules as vehicles **(551)**

Parent responsible for child **551.101**

Use of road & Bike, equipment **(551)**

You make the call



A person may not use a bicycle to carry more persons than the bicycle is designed or equipped to carry. **(551.102b)**

You make the Call



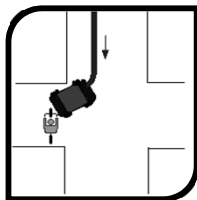
May not carry an Object that prevents having at least one hand on the handlebars (551.102c)

You make the Call



A person operating a bicycle shall ride only on or astride a permanent and regular seat attached to the bicycle (551.102a)

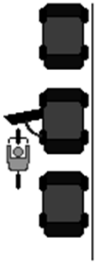
The cross walk Slam



How to avoid this collision:

1. Get a headlight. At night, it's required by law.
2. Slow down enough that you're able to completely stop if necessary.
3. Don't ride on the sidewalk in the first place.

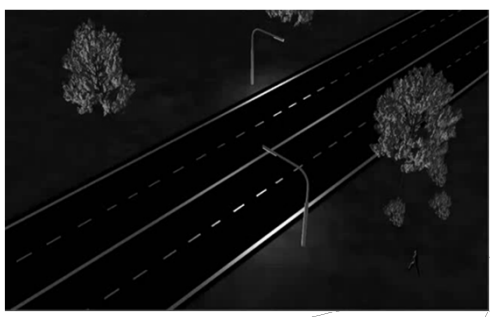
Door Prize




How to avoid this collision:

Ride to the left. Ride far enough to the left that you won't run into any door that's opened unexpectedly.

What's Up Here ?



Walking While Intoxicated



John's "Virtual" Journey

<http://safety.fhwa.dot.gov/saferjourney/>



Where did the Chicken cross the Road (and what was there)?



Where did the Chicken cross the Road (and what was there)?



WHY

Safety issues

Laws are mostly traffic Name 1 resource

Diverted Resources

We are all about to

WALK out of here

WALK to our cars

WALK across the street

David Hamilton parisattorney@gmail.com
